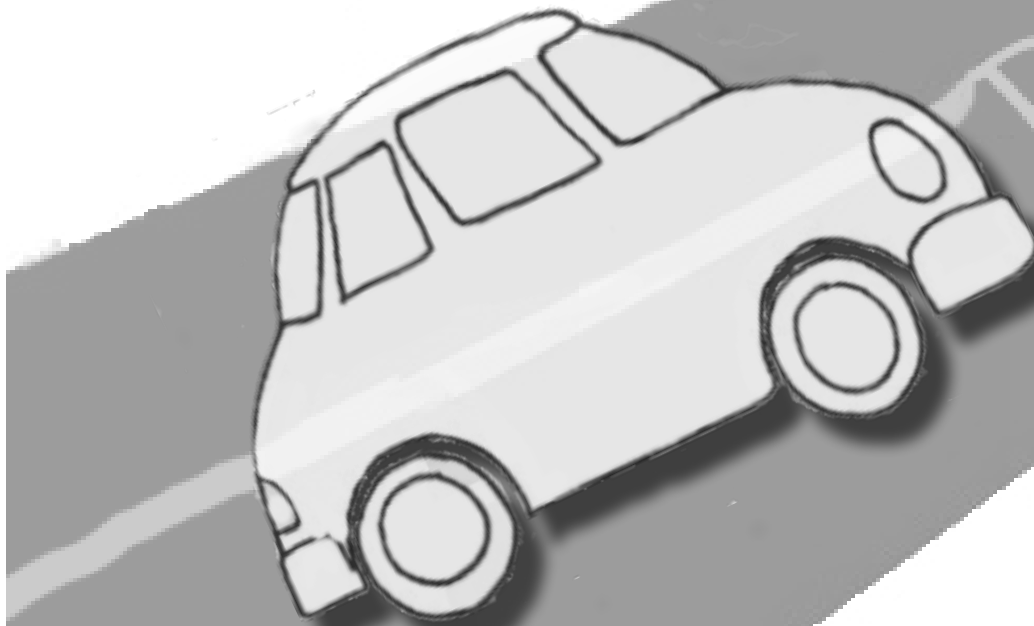


My Sister B'nai B'rith Girls,

Every one of you has a unique BBG path. Your passion is what steers this car towards its destination. Let's amplify our path. Let's open up new pathways for the future BBGs that will drive in afterwards. As your 29th Regional N'siah, I will strive to ensure that every BBG in Lonestar finds their own BBG path.

This isn't just Lonestar's path-it's yours.
Together, let's steer Lonestar to new heights.



Respectfully Submitted With Undying Love For,
Lonestar Region #73, Tikvah BBG #2473,
ILTC 2012, GLTC 6 2011, the 28S & 29S, steering your own
path, and each and every one of you,
I remain,
Andrea Danielle Sklar
Candidate for your 29th Regional N'siah

Andrea Sklar

caucusing for the highly esteemed position of your
29th Regional N'siah

The Engine- Tikvah BBG

- Orechet Spring Term & Fall Term '11
- **MIT Mom Spring Term '12**
- **Best Board Member Award Spring Term '11**
- Regional Convention Committee '11
- Board Inductions Spring & Fall '11, Spring & Fall '12
- Life Ceremony '11, '12
- MIT Inductions '11, '12

The Tires- Lonestar and GHC

- **Regional Mazkirah '11-'12**
 - Led the Speak UP Chair Network and the BBYO Connect Committee
 - Managed the LSR Facebook and Twitter accounts
 - Wrote press releases for LSR events
 - Edited the LSR BBG Constitution
 - Created the Regional Yearbook
 - Created the Lonestar Regional Website
 - Created "How to" releases for my counterparts
 - Sent weekly counterpart emails
- Regional Execs- January '12, August '12
- MIT/AIT- '10, '11 Steering, '12
- Regional Convention '10, '11, '12*
- Regional Kallah '12
- Summer Programs Committee '11-'12
- GHC BBG Sisterhood Night '11
- GHC NOM Pickup '11, '12
- GHC Beau/Sweetheart Walkdowns '11, '12
- GHC Fall Kickoff '11, '12
- GHC Spring Kickoff '11, '12
- GHC MIT Intake- '11, '12
- GHC LTI '12
- Houston BBGG Kickoff- November '12
- Count Me In- '12

The Steering Wheel- International

- CLTC 6 2011
- **ILTC 2012**
- Ambassador to Bulgaria 2013*
- **International Convention 2012, 2013***
- **February Execs 2013**
- Silver Star of Deborah Award
- Eternal Light Recruitment Award*
- **International Leadership Network-**
- **BBYO Connect Committee '12-'13**

The Horn- Other

- **Teen Israel Ambassadors Program '12-Present**
- AIPAG Houston Regional Intern Seminar '12
- Hebrew Tutor at Temple Sinai '10-Present
- Ritual Committee Member at Temple Sinai '10-Present
- TeSTY RGVP (Religious and Cultural VP)- '11, '12
- SHS Yearbook Staff- '11-'12, '12-'13 (Assistant Editor-in-Chief)

The Path-Goals and Ideas Lonestar Region's Path

- Strengthen chapters to the same level and ensure that no chapter feels under the radar
- Increase Lonestar's international involvement
- Hold a regional BBG Buisness meeting at Regional Kallah
- Create new chapters in areas where Jewish teens are not currently involved with BBYO
- Set regional goals with the chapters in mind
- Bring international initiatives to the chapter level
- Create a partnership between LSR and a BBYO Global Community
- Keep the LSR BBG Constitution updated and relevant to what is going on in the region
- Create position networks with the regional board and chapter counterparts
- Strengthen year-round recruitment
- Utilize the chair network to assist with regional priorities
- Increase the BBG sisterhood by encouraging BBG chapters to program together
- Hold a LTI in both councils to educate chapter members
- Let Houston Connect 68 8th graders have a taste of what BBYO chapters are like in the spring semester of their 8th grade year
- Strengthen our FAN (Friends and Alumni Network)
- Send regional updates to members and parents

Personal Path

- Work with the 29th Regional Board and help them to function as a cohesive unit
- Respond to all communication within 12 hours to keep the region moving
- Build relationships with the Regional Board and chapter N'siot
- Visit all three cities throughout the term
- Be present at chapter programming
- Be in constant communication with directors
- Represent LSR BBG with the utmost passion, pride, and respect at all times